



## Oil Cooler Kit #6099-0037

### Parts List

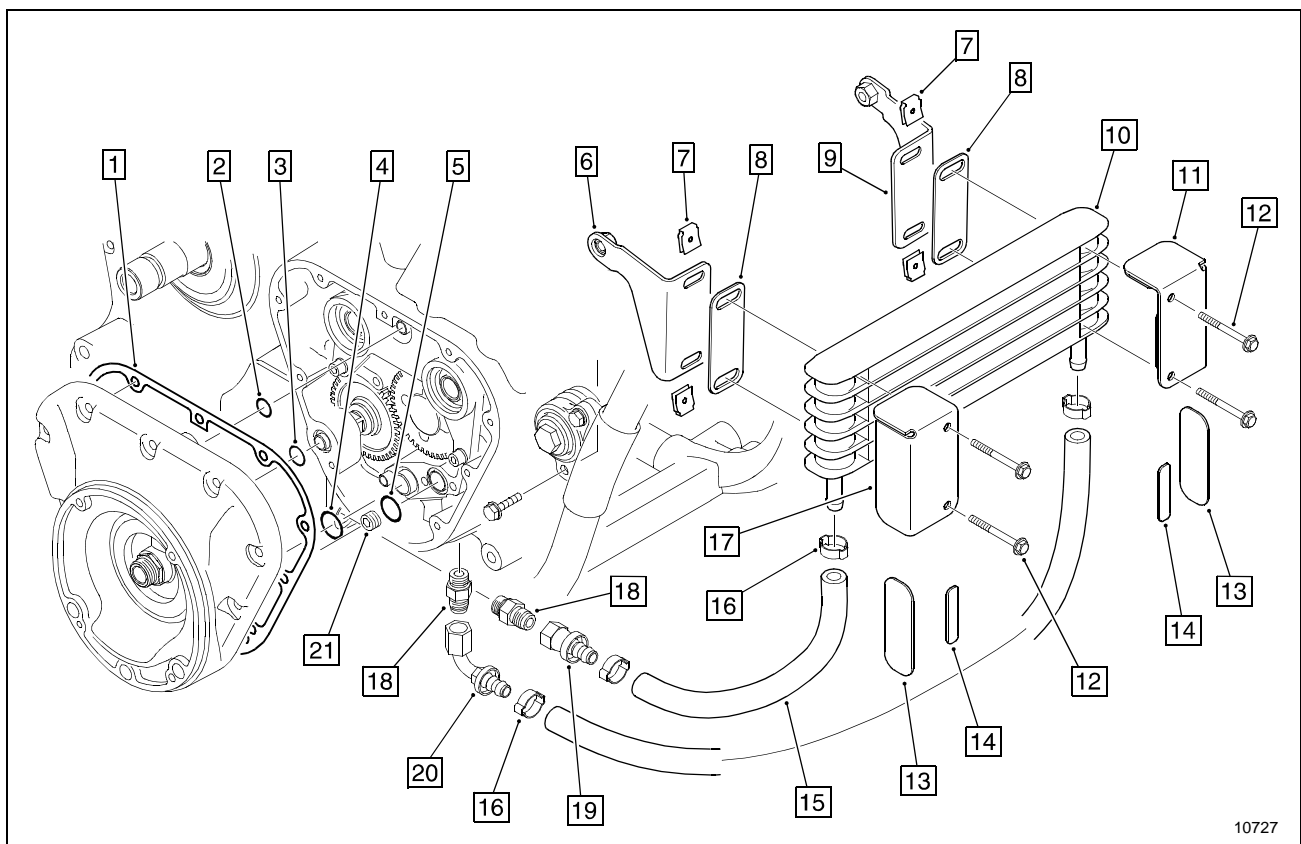


Figure 1

Item	Part No.	Description	Qty.	Item	Part No.	Description	Qty.
1.	3599-0053	Gasket - Timing Cover	1	12.	5199-0798	Screw - Hex Hd.	4
2.	6199-0026	Seal - O-ring	1	13.	3599-0110	Pad - Cover Side	2
3.	6199-0017	Seal - O-ring	1	14.	3599-0122	Pad - Cover Front	2
4.	6199-0034	Seal - O-ring	1	15.	3599-0114	Hose - 28"	1
5.	6199-0030	Seal - O-ring	1	16.	5499-0031	Clamp - Hose	4
6.	3599-0100	Bracket - Cooler RH	1	17.	3599-0108	Cover - Cooler RH	1
7.	3599-0103	U-nut	4	18.	6399-0003	Fitting - Adapter	2
8.	3599-0102	Pad - Bracket	2	19.	6399-0002	Fitting - Swivel Straight	1
9.	3599-0105	Bracket - Cooler LH	1	20.	6399-0001	Fitting - Swivel Elbow 90°	1
10.	3599-0089	Cooler - Oil	1	21.	6499-0059	Plug - Pipe	1
11.	3599-0112	Cover - Cooler LH	1				

## Installation Instructions

### Notice

Obtain a new oil filter and 4 quarts of genuine Excelsior-Henderson motor oil before installing the oil cooler kit.

### Special Tools:

- 3/16" Extra Long Ball Hex Driver
- Otiger Clamp Pliers

1. Drain the engine oil as described in the Super X Rider's Handbook™.
2. Before installing a new oil filter, carefully remove the timing cover (see Figure 2). Remove

and discard the timing cover gasket, O-ring, and idler shaft O-ring. Clean any remaining gasket material from the timing cover and the engine case.

### Notice

Use a flat blade screwdriver to prevent pulling the idler shaft from the timing chest when removing the timing cover.

3. Remove the scavenge pump (see Figure 2). Remove and discard the input and output port O-rings.

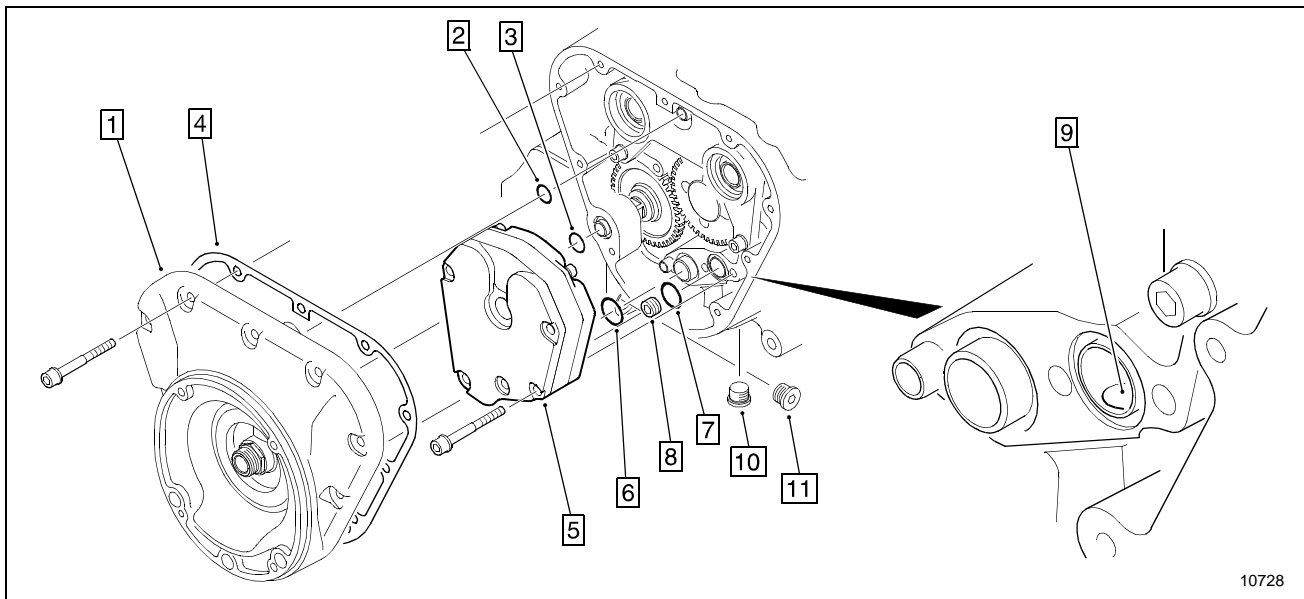


Figure 2

- |                        |                             |
|------------------------|-----------------------------|
| 1. Timing Cover        | 7. Output Port O-ring       |
| 2. Timing Cover O-ring | 8. Plug - Pipe              |
| 3. Idler Shaft O-ring  | 9. Output Down-port         |
| 4. Gasket              | 10. Scavenge Pump Case Plug |
| 5. Scavenge Pump       | 11. Pressure Pump Case Plug |
| 6. Input Port O-ring   |                             |

4. Install the pipe plug provided with the kit in the scavenge pump output port as shown (see Figure 2).

### Notice

Make sure the plug completely clears the output down-port (see Figure 2).

5. Remove the scavenge pump case plug and the pressure pump case plug (see Figure 2). Install the adapter fittings provided.

**Torque: 18 ft-lbs**

**⚠ Caution**

If the oil cooler is removed from the motorcycle; the engine fittings must be replaced with the original plugs, and the internal pipe plug must be removed before starting the engine.

6. Install the new scavenge pump input and output port O-rings provided. Install the scavenge pump.

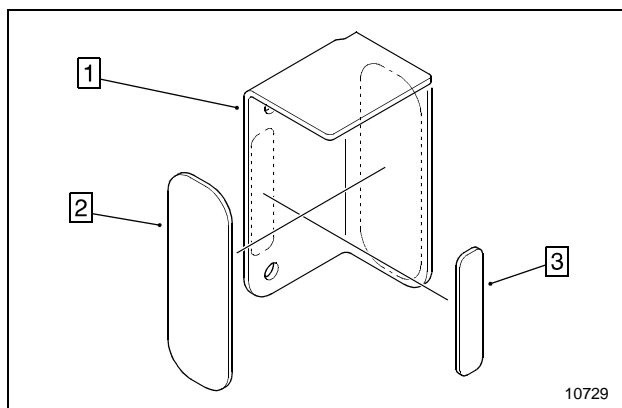
**Torque: 8 ft-lbs**

7. Install the new idler shaft O-ring, timing cover O-ring, and cover gasket provided. Install the timing cover.

**Torque: 8 ft-lbs**

8. Apply a thin film of clean engine oil to the new oil filter gasket. Screw the new filter on until the gasket contacts the filter mounting plate. Tighten the filter *by hand* an additional 1/2 to 3/4 turn.

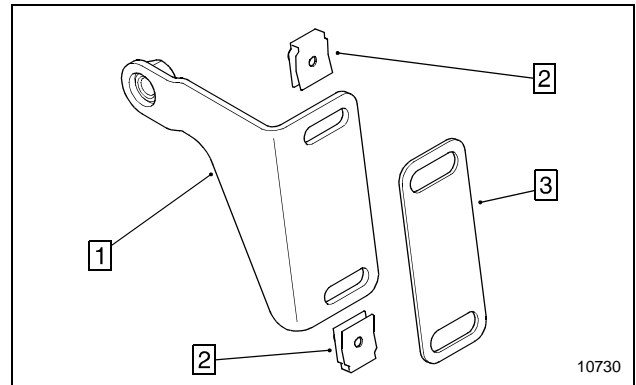
9. Attach the cover pads to the right and left side oil cooler covers as shown (see Figure 3).



**Figure 3**

- 1. Oil Cooler Cover (right side shown)
- 2. Pad - Cover Side
- 3. Pad - Cover Front

10. Install the U-nuts and the bracket pads to the right and left side oil cooler brackets as shown (see Figure 4). Make sure the U-nuts lay underneath the pad.



**Figure 4**

- 1. Oil Cooler Bracket (right side shown)
- 2. U-nut
- 3. Pad - Bracket

11. Cut a 14" length from the hose provided. Fit one end of the hose over the elbow swivel fitting. Slide two hose clamps onto the hose and fit the other end over the left side oil cooler fitting (see Figure 1). Crimp the hose clamps over the fittings.

12. Cut a 13 1/2" length from the hose provided. Fit one end of the hose over the straight swivel fitting. Slide two hose clamps onto the hose and fit the other end over the right side oil cooler fitting (see Figure 1). Crimp the hose clamps over the fittings.

13. Loosen the lower front engine mount flange screws and remove the lock washers and hex nuts. Install the right and left side oil cooler brackets (see Figure 1). Tighten the screws finger tight.

14. Hold the oil cooler and the oil cooler covers in position and install the four hex hd. screws provided.

15. Adjust the angle of the oil cooler to mirror the frame down-tubes and tighten the lower front engine mount flange screws.

**Torque: 20 ft-lbs**

16. Install the straight swivel fitting to the pressure pump case adapter. Install the elbow swivel fitting to the scavenge pump case adapter (see Figure 1).

**Torque: 18 ft-lbs**

17. Fill the crankcase with 3-3/4 quarts of genuine Excelsior-Henderson motor oil.

18. Start and run the engine until it reaches normal operating temperature.

 **Caution**

After an oil change, the low oil pressure indicator remains illuminated longer than usual before going out. Revving the engine while the low oil pressure indicator is illuminated can damage the engine.

---

19. Stop the engine and make sure there are no leaks around the drain plugs, engine fittings, oil cooler hose connections, and oil filter. Reinstall the oil filter cover.

20. Check the oil level using the recommended procedure and adjust if needed (see the Super X Rider's Handbook).



**EXCELSIOR-HENDERSON MOTORCYCLE MANUFACTURING COMPANY**

805 HANLON DRIVE · BELLE PLAINE, MINNESOTA 56011 · TELE: 612.873.7000/FAX: 612.873.7030 · [www.excelsior-henderson.com](http://www.excelsior-henderson.com)  
Excelsior-Henderson™, Super X™, Rider's Handbook™, and the X & Bar logo are registered trademarks of the Excelsior-Henderson Motorcycle Manufacturing Company. Loctite® is a registered trademark of the Loctite Corporation. Always ride safely, within the limits of the law, and your riding ability. Never ride under the influence of alcohol or drugs. Know your Excelsior-Henderson motorcycle and read your Rider's Handbook from cover to cover. We recommend you take a Motorcycle Safety Foundation Rider Education Course (for a course near you call 1.800.447.4700). We also recommend that you always wear a helmet, appropriate protective eyewear, and appropriate clothing, and that you insist your passenger does the same. However, we respect your right as an individual to make your own choice about the protective equipment you wear (within the limits of the law). Protect your privilege to ride by joining the American Motorcyclist Association.